



BRIGHTLOGIC BLUETOOTH UPGRADE

Our BrightLogic 2 Laundry Dosing System has been upgraded to use the latest Bluetooth technology to communicate between user's PC/laptop and the BrightLogic laundry dosing system, without the use of a dongle.



WHAT IS CHANGING?

You no longer need to buy a bespoke Bluetooth dongle from Brightwell, as the new software uses Bluetooth already built into the PC to communicate with the BrightLogic 2 unit. This new feature will prevent installation delays and is more cost-effective.

Why is this better?

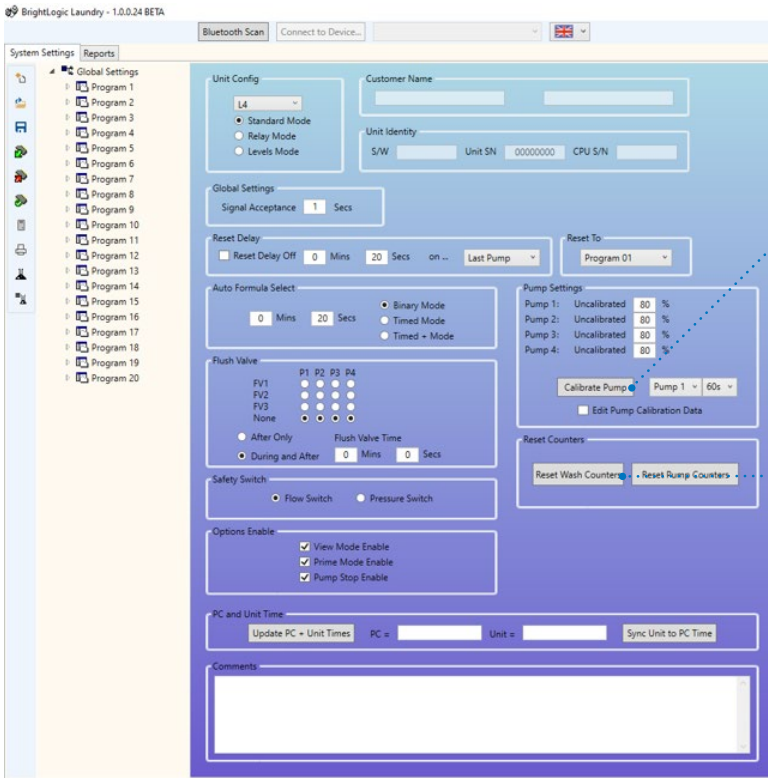
- No more issues with new customers and dongle equipment, installation and delivery times.
- Lost or damaged dongles can cause delays
- Installation on certain devices isn't always compatible or easy-to-install
- Currently, individual engineers require their own dongle. This can be costly with a large team of engineers. Most PC's have built in Bluetooth, which means no added costs.

THE NEW TOOL SUPPORTS A NEW OPERATING MODE CALLED LEVELS MODE

Brightlogic 2 pump was recently launched with a new mode that could only be programmed by the control panel on the unit, which takes a lot of time and is very repetitive.

BrightLogic 2 software supports this mode and allows quick simple set up to those using levels mode.



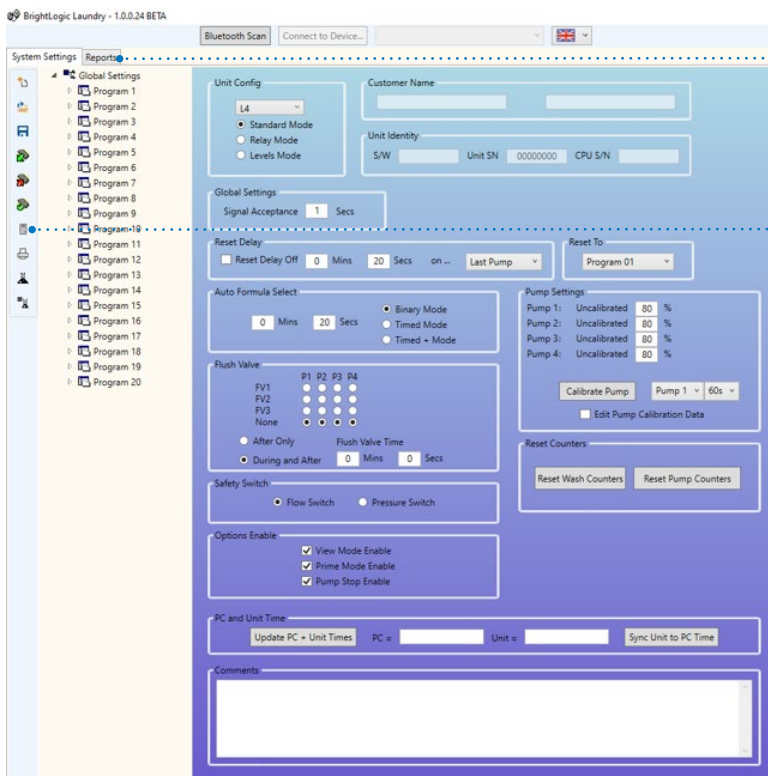


CALIBRATE PUMP

Calibrating pumps from the PC via Bluetooth is now clearly located on the main page.

RESET WASH COUNTERS

Resetting pump counters to measure the pumps used is now featured on the main screen.



REPORTS

Quick and easy access to chemical usage reports.

THE DRY WEIGHT CALCULATOR IS NOW MORE ACCESSIBLE ON THE SIDE MENU

This tool allows you to create one set up and scale the amount of chemical dosed with one simple tool, rather than creating multiple set ups which was time consuming.

CONNECT TO BLUETOOTH

Connecting to Bluetooth has a button clearly located on the main, making connecting to the BrightLogic unit direct and easy to do.

SUPPORTING MATERIAL

Available on the Brightwell website:

www.brightwell.co.uk/resource-hub/laundry-dosing/brightlogic/docs

- **B980 V1.3** - Laundry full guide (English, German, Spanish, Italian & French)
- **B981 V1.6UL** - Laundry quickstart guide (English, German, Spanish & French)
- **B988 V1.3** - Computer Software Instructions (English, German, Spanish & French)

FAQ'S

- **What BrightLogic laundry computer software version supports the new Bluetooth communication capability?**
BrightLogic laundry computer software version 2.0 or greater.
- **Where can I find/download the new BrightLogic laundry computer software?**
On the Brightwell website: www.brightwell.co.uk/resource-hub/laundry-dosing/brightlogic/software.
- **What Operating System supports the new BrightLogic laundry computer software?**
Windows 7 and upwards. The laundry computer software is not compatible with MAC operating systems.
- **How do I know what version of BrightLogic laundry computer software I have?**
Click on the Help/About button on the task bar of the BrightLogic laundry computer software and your version will be displayed on the top left of the window.
- **Why am I unable to install the new BrightLogic version 2.0 or greater laundry computer software?**
Ensure that you have full administrator rights on your PC/laptop. If you don't have administrator rights, please contact your IT department.
- **Do I need to uninstall previous versions of BrightLogic laundry computer software before installing the new version?**
It is not always necessary, but it is advisable.
- **Do I need to backup my saved BrightLogic laundry setup files?**
Setup files created with BrightLogic 1 software **cannot** be opened with BrightLogic 2 software. If the BrightLogic 1 software uploads the files to a BrightLogic 1 or 2 pump, BrightLogic 2 software can read the information and save to a BrightLogic 2 format.
- **Why won't my BrightLogic Bluetooth dongle connect to the BrightLogic laundry dosing system?**
 - Refer to the manual for Bluetooth connect instructions
 - Check Bluetooth is enabled on the PC being used
 - Remove BrightLogic 1 Bluetooth dongle if connected
 - Check your machine is Bluetooth ready. If the machine is not Bluetooth ready a generic Bluetooth dongle will need to be used.
- **What BrightLogic laundry dosing system firmware supports the new Bluetooth communication capability?**
BrightLogic laundry dosing system firmware version 1.72 or greater.
- **How do I know if a BrightLogic laundry dosing system is Bluetooth compatible?**
All Bluetooth compatible laundry dosing systems will have a Bluetooth symbol above the centre of the LCD display.
- **Will I still be able to communicate with non-Bluetooth BrightLogic laundry dosing systems?**
BrightLogic 2 software cannot connect with non-Bluetooth BrightLogic dosing systems.
- **If I require further assistance regarding the new BrightLogic computer software?**
Please contact the Brightwell technical support line 01273 513 566.