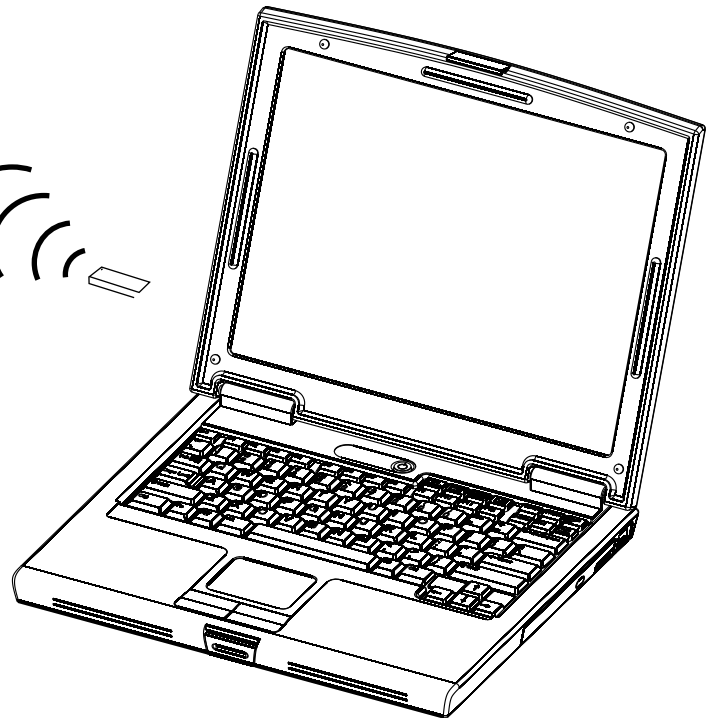
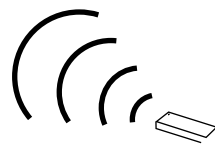
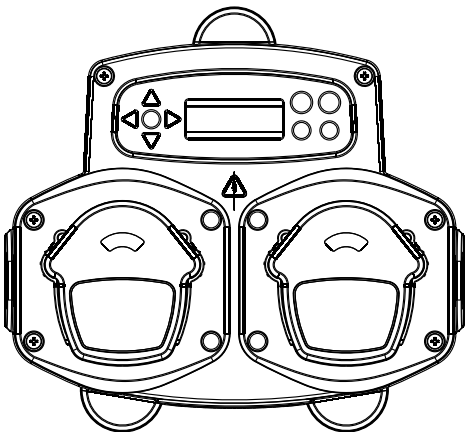


BRIGHTWELL

REVOLUTIONARY DISPENSING SOLUTIONS

BrightLogic Computer Software

Instruction Manual



Operation	2	Adding Comments to Programs	15
System Requirements	2	Writing to a Unit	16
Downloading software	2	Writing to a Bluetooth Enabled unit	17
Installation:		Reports:	
Connecting Units	3 - 4	Synchronising Date and Time	18
Set-up Language/Comm.'s	5	Creating a Report	18
Programming:		Selecting a Date Range	19
Toolbars	6	Adding Comments to a Report	19
Program Editor	7	Adding a Company Logo	20
Program Tree	7	Example Report	20
Reading from a Unit	8	Exporting a Report	21
Global Settings	8	Notes	22
Reading from a Bluetooth enabled unit	9		
Program Inputs	10		
Program Summary	10		
Calibrating Pumps	11		
Resetting Counters	12		
Re-naming Programs	12		
Copying Programs	13		
Deleting Programs	13		
Editing Chemical Names	14		
Assigning Chemical Names	14		
Setting Machine Weight	15		

The BrightLogic Computer software offers the ability to read and download programming parameters to New BrightLogic Laundry units.

Program (formula) files for common installations and all unit types can be created and saved. This allows quick, easy set-up and modification of units.

A “Dry Weight” feature (see page 15) enables you to quickly adapt saved programs to work on machines with larger or smaller load weights.

Cycle, Run-time and Flow Rate information can be read from a unit and saved or printed as a report. When a real time clock is connected it is possible to extract reports from a selectable date and time range (Shift Range)
These reports can also be exported into Excel spreadsheets.

Communication can be made via the New BrightLogic Wireless dongle or via an RS232 serial computer lead.

SYSTEM REQUIREMENTS

Minimum requirements

Pentium 166Mhz processor or faster

Windows 95 or later (**This software is not compatible with Windows NT**)

Internet Explorer 4.0 or later

16MB of RAM (64MB recommended)

1MB of available hard-disk space

SVGA video adaptor

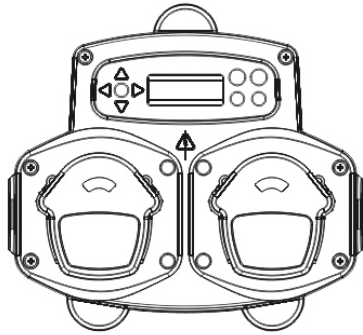
Colour monitor with 800x600 resolution and 256 colours

WinZip is also required to download the software.

INSTALLATION - DOWNLOADING SOFTWARE

The BrightLogic computer software is available exclusively via download from the Brightwell website.

Go to www.brightwell.co.uk

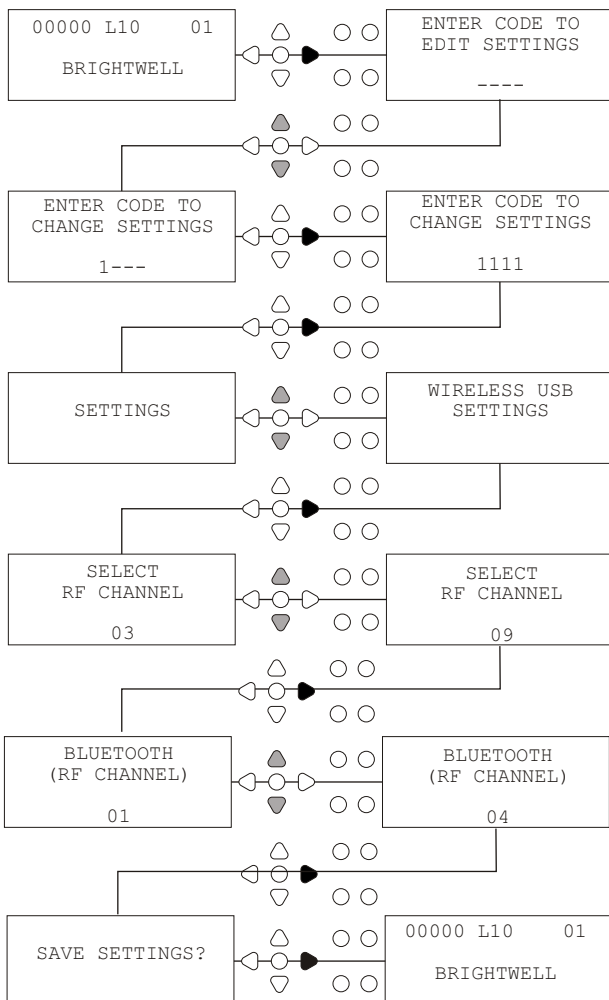


Wireless USB connection

These units will require the use of the wireless USB dongle (WLCOM-WUSB)

Ensure that the BrightLogic unit is switched ON before attempting to make any connections.

See page 8 on how to read the unit and page 15 on writing to the unit. You must ensure that all BrightLogic units are set to different RF channels, to set these up please complete the following process.



From the default screen, press the **FWD/ACCEPT** key.

Enter the correct four-digit access code using the **UP** and **DOWN** keys to select a number and the **FWD/ACCEPT** key to move on/confirm.

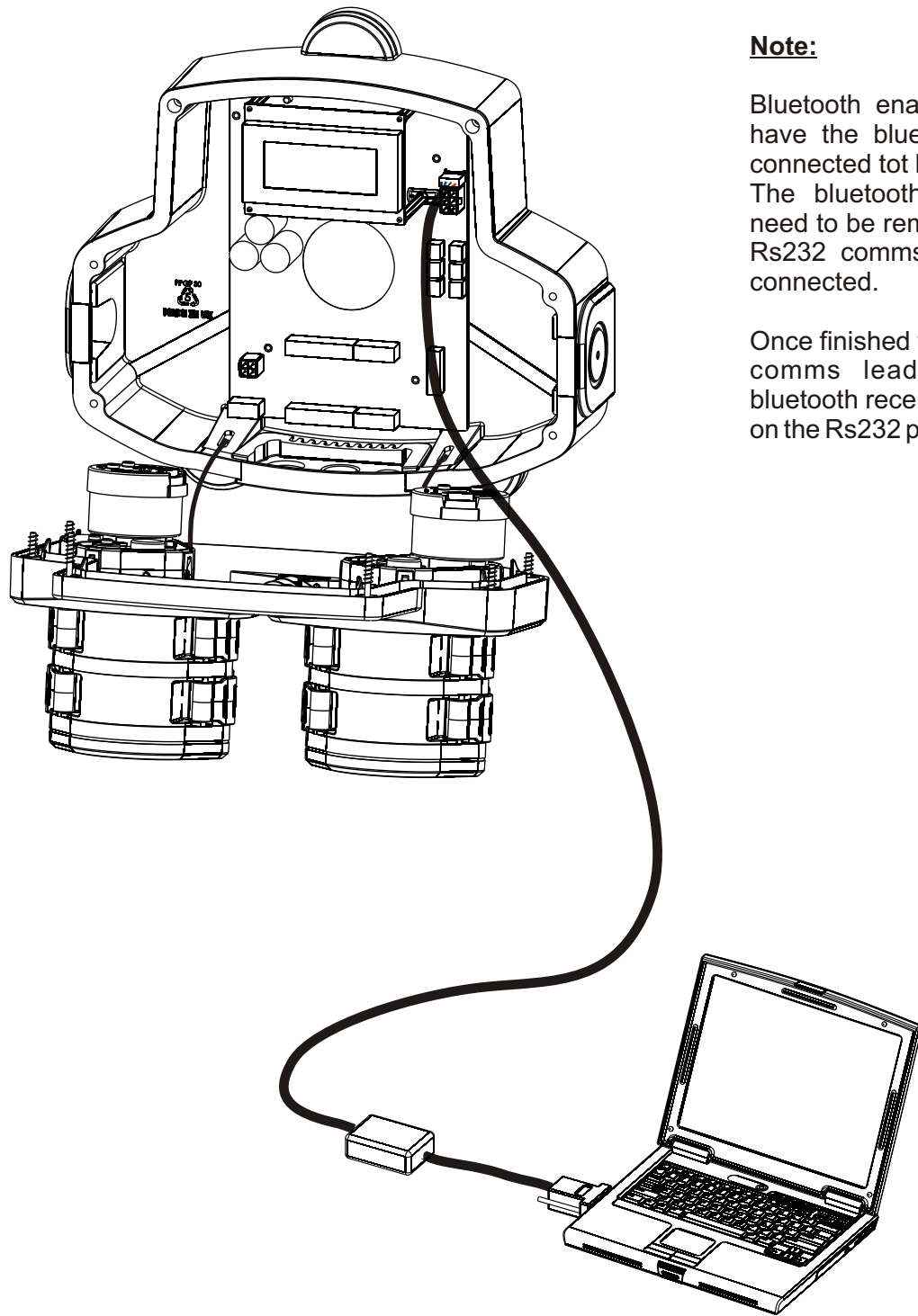
The unit will then give you the option of editing the Settings, press the **UP** or **DOWN** key to it displays WIRELESS USB SETTINGS, press the **FWD/ACCEPT** key.

It will display the current RF channel it is on (default is 03) change this channel by pressing the **UP** or **DOWN** key. You must ensure all units that are in the same room are on different channels.

If a Blue tooth device is attached to the Rs232 output on the PCB the blue tooth channel select menu will appear after the RF channel. The default is channel 01

Please Note:

If you are having any communication issues, change the channel as you may find that other wireless (2.4Ghz) devices are using this channel.



Note:

Bluetooth enabled units will have the bluetooth receiver connected to the Rs232 Port. The bluetooth receiver will need to be removed before a Rs232 comms lead can be connected.

Once finished with the Rs232 comms lead ensure the bluetooth receiver is put back on the Rs232 port

RS232 connection

These units will require the use of a RS232 COMM's lead (WLCOM-RS232)

Ensure that the BrightLogic unit is switched OFF before attempting to make any connections.

Connect the supplied cable to the internal RS232 communication port, in the top right hand corner of the BrightLogic PCB.

Connect the other end of the cable to the Serial port or a USB to serial converter.

Power up the BrightLogic unit.

(Warning - To avoid risk of electric shock, DO NOT touch any parts within the Brightlogic unit when the power is on).

When it is opened for the first time, you will need to select the language that you will require for the program.

Once the desired language has been selected, the Brightlogic program will need to be shut down & restarted.

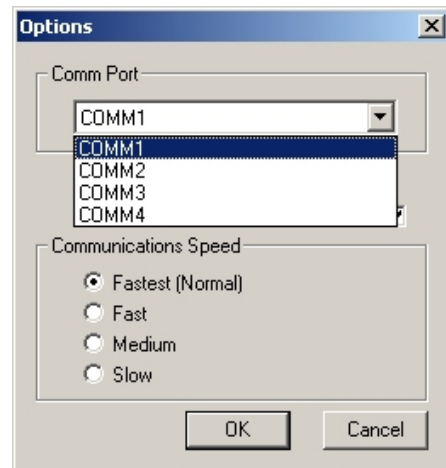
This screen can be accessed at any time, using the “Help” pull down menu.

Note:
If English is selected you will not need to restart the Program



Select the correct communication port by Clicking on the [Options] command, selecting [Options] from the [View] menu or by pressing “F10”.

It will only display the COMM ports that are available on your PC. To find out what port the wireless dongle has automatically selected, you will need to go into Device manager and look under PORTS (COM & LPT). It will then display Brightwell RF dongle.

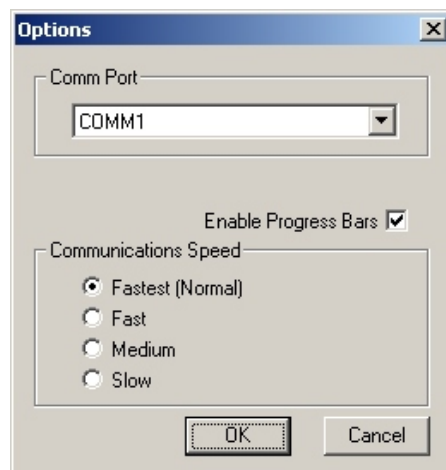


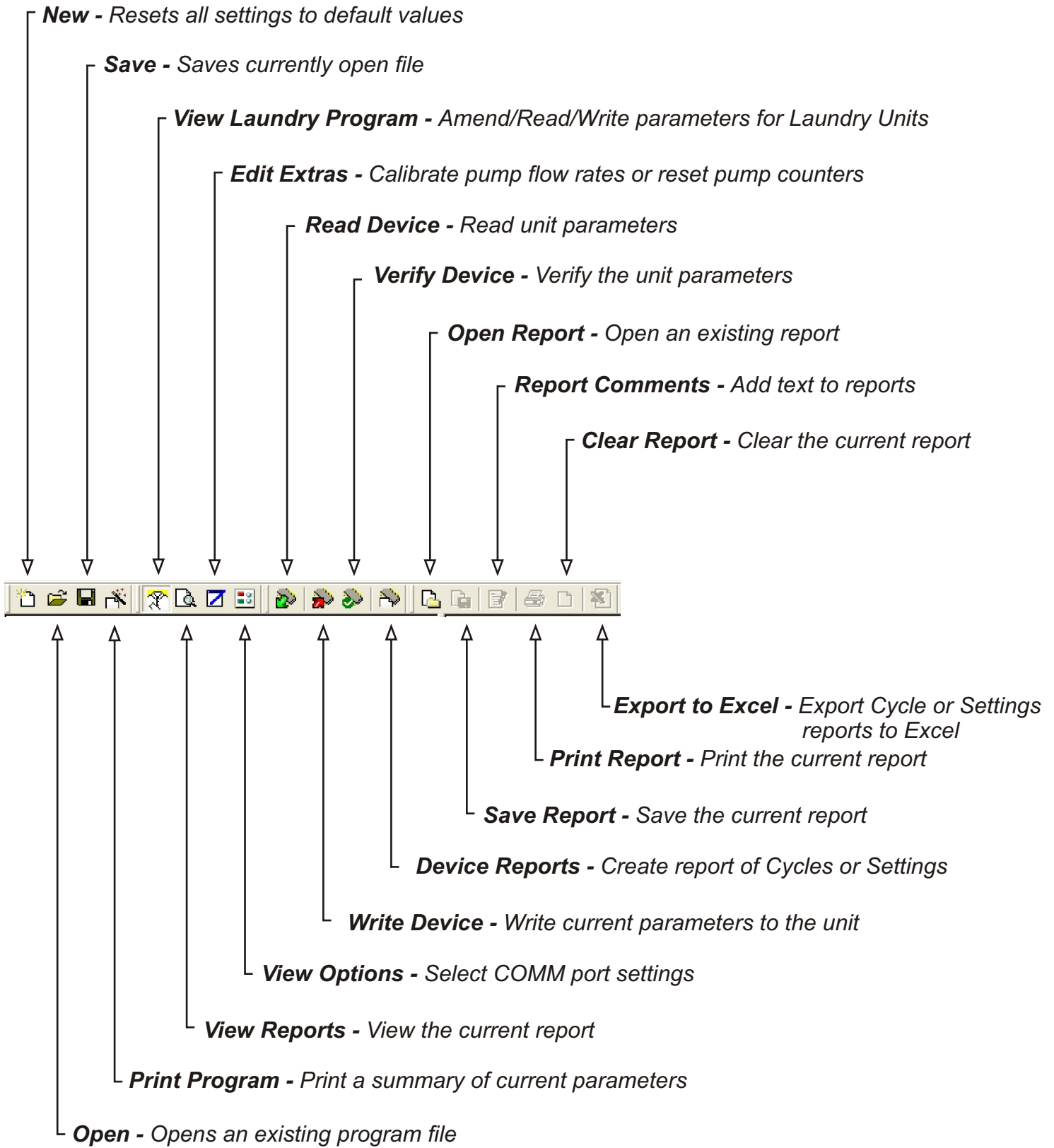
If the program is running on a PC with less than 64MB of RAM, remove the tick to disable the progress bar function.

If using a Processor of 2GHz or higher then you may experience communication problems when writing to a Brightlogic unit.

The speed that the unit communicates at can therefore be adjusted.

Start with “Fastest” and work down to “Slow” until the unit communicates correctly.

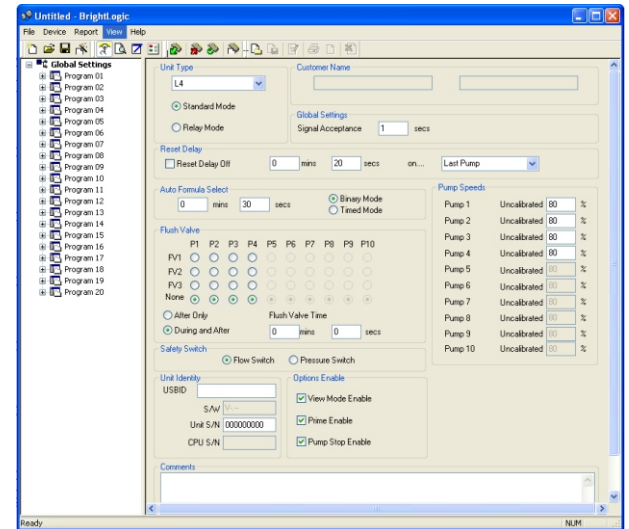




Once you have opened the BrightLogic computer software,

Click on the [View Laundry Program] button to open the laundry program editor.

From within the program editor, you can perform all of the functions that you can via the keypad of a Laundry unit.



LAUNDRY UNITS - PROGRAM TREE

The “Program Tree” is located on the left of the screen.

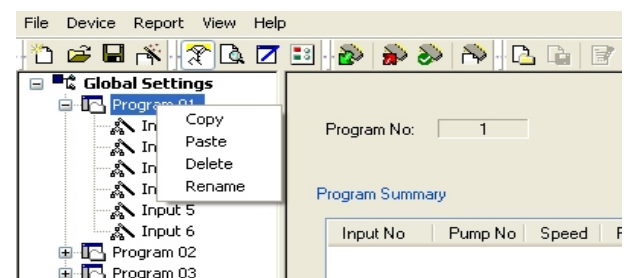
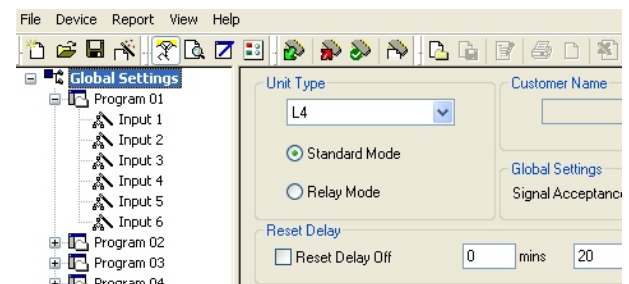
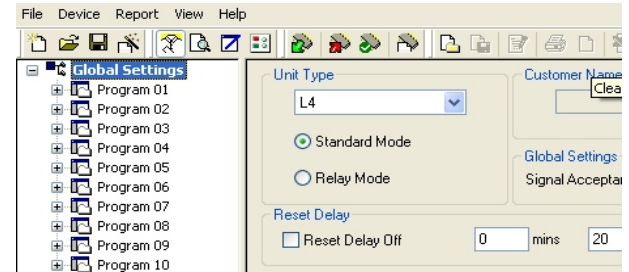
The tree can be used to access the “Global Settings” screen, the “Program Summary” screens for each of the 20 programs (formulas) and the 10 individual “Input Screens” within each program.

The “Program Tree” also displays which programs are active. An in-active program will display a white folder. This folder will become green when the program contains enabled parameters.

The Input symbols will also turn green, when they contain enabled pumps.

From within the “Program Tree”, it is also possible to:

- re-name programs (see page 12)
- copy programs (see page 13)
- or
- delete programs (see page 13)



In order to program a unit, it is first necessary to read its current settings (unless programming a new unit).

Select the [Laundry] button on the toolbar (or press “F2”) to display the laundry program editor screens.

Select the [Read Device] icon on the toolbar.

Select the [Scan Device] button.

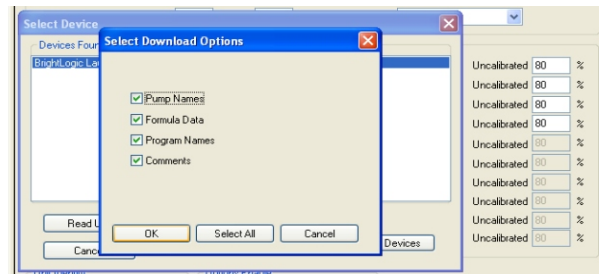
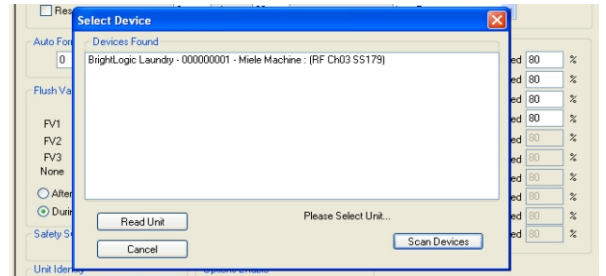
In the Select Device window, pick the unit that you wish to read from and click [Read Unit].

Note: a wireless USB ID can be given a unique reference, (see page 16) allowing users to recognize units easier.

You will be prompted to enter the unit’s four-digit access code. Enter the code and click [OK].

The “Download Options” screen will then be displayed. Select the data that you wish to download from the unit (or click [Select All]). Click [OK].

The software will then download the requested data from the attached unit into the “Program Editor” and display the “Read Complete” window. Click [OK] to clear the window.



LAUNDRY UNITS - GLOBAL SETTINGS

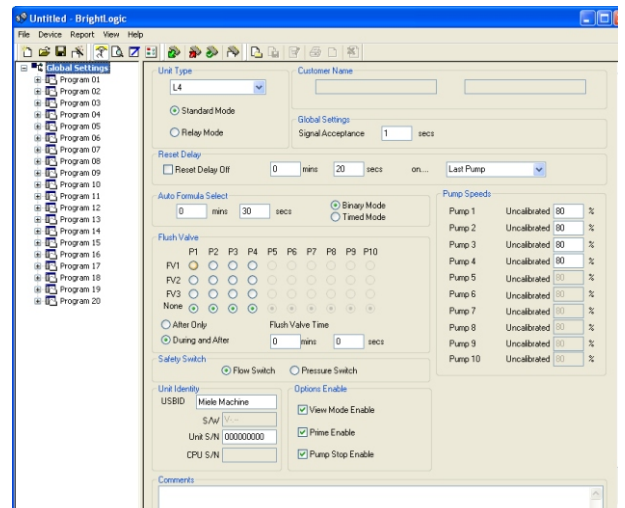
The Program Editor will automatically default to the “Global Settings” screen.

This screen is used to set the conditions, which will apply to all pumps under all programs.

Conditions such as: -

- Run Mode
- Signal Acceptance Time
- Reset Delay Time
- Auto Formula Select Mode
- Reset Formula select to...
- Flush Valve Allocation (depending on unit)
- Flush Valve Time (optional)
- Safety Stop Mode
- Pump Speeds
- View Mode Disable
- Prime Mode Disable
- Pump Stop Mode Disable

You can also add comments to the unit (see page 15).



LAUNDRY UNITS - READING A BLUETOOTH ENABLED UNIT ENGLISH

In order to program a unit, it is first necessary to read its current settings (unless programming a new unit).

Select the [Laundry] button on the toolbar (or press "F2") to display the laundry program editor screens.

Select the [Bluetooth Scan] button

In the Select Device window, pick the unit that you wish to read from and click [Scan Devices] The unit will appear as BLL_1 (H- 064) 1 refers to the channel number of the unit (see page 3) H 064 is the signal strength H=High, M= Medium, L =- Low the number refers to how good the signal strength is. Lower numbers are stronger signals

Select the unit that appears ending in (RS232/BT)

Select the [Read Device] icon on the toolbar.

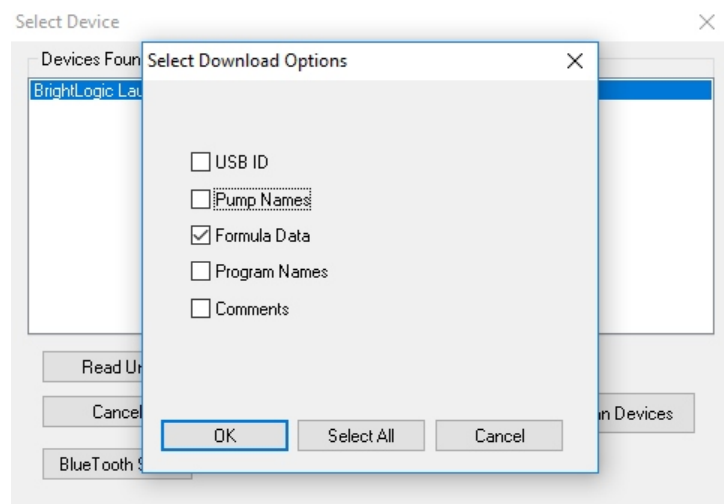
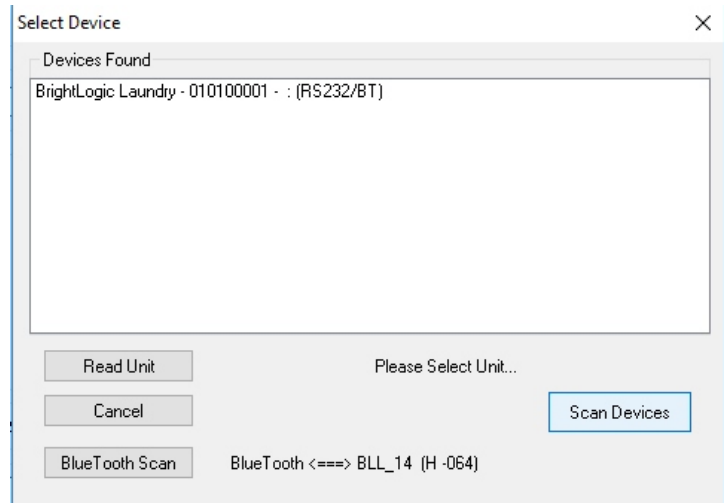
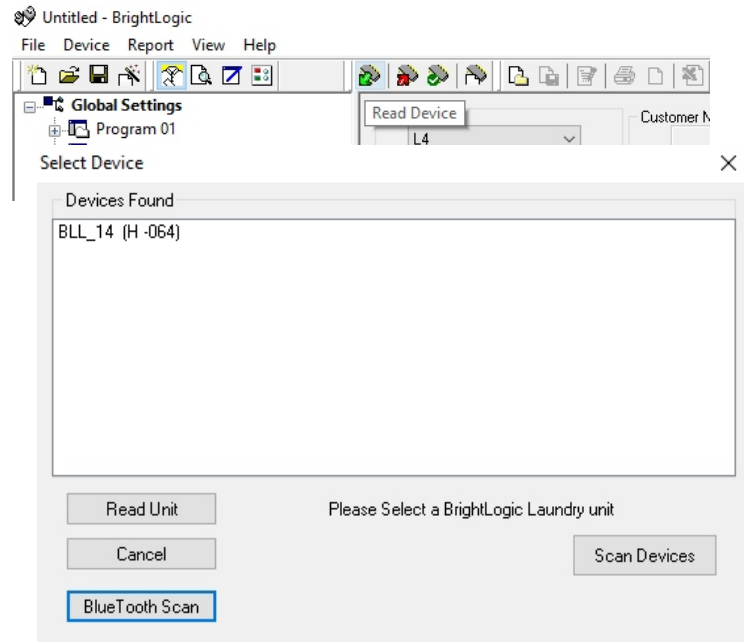
In the Select Device window, pick the unit that you wish to read from and click [Read Unit].

Note: a wireless USB ID can be given a unique reference, (see page 16) allowing users to recognize units easier.

You will be prompted to enter the unit's four-digit access code. Enter the code and click [OK].

The "Download Options" screen will then be displayed. Select the data that you wish to download from the unit (or click [SelectAll]). Click [OK].

The software will then download the requested data from the attached unit into the "Program Editor" and display the "Read Complete" window. Click [OK] to clear the window.

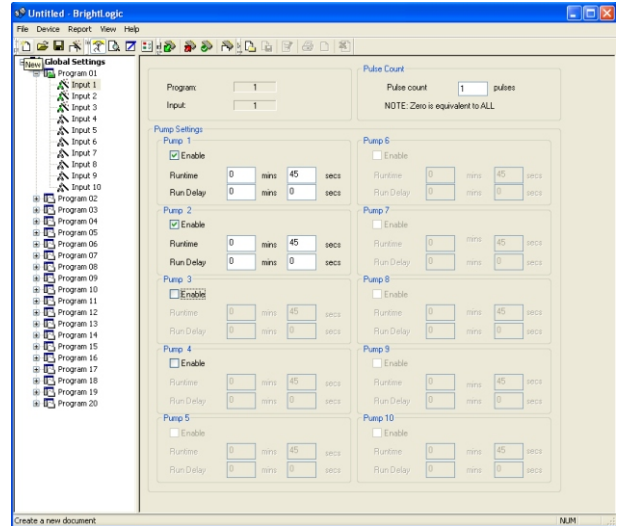
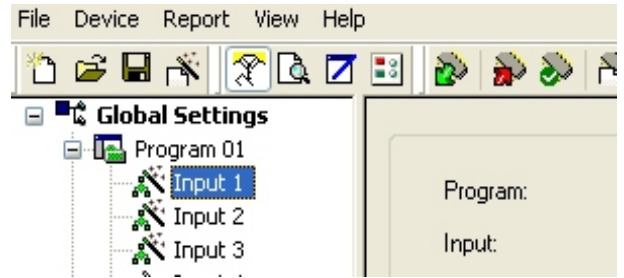


Right click on the [+] sign next to the required program (formula) number in the program tree (or double click on the program name in the program tree). This will expand the tree to show the program's Signal Inputs.

From this screen, you can:

- Enable/Disable Pumps
- Edit the Pulse Count for that individual input
- Edit the Dosage/Run Time for each pump
- Edit the Delay Time for each pump.

Note:
The Dosage option will only become available if the pumps have been calibrated (see page 10). This can be done without a unit connected.



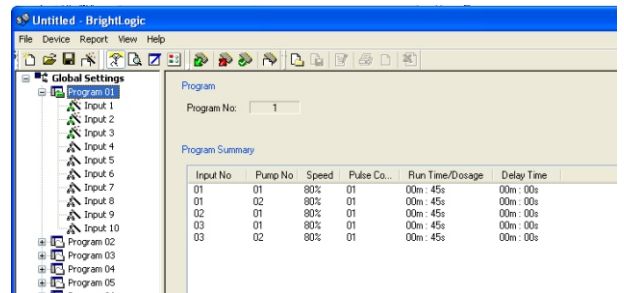
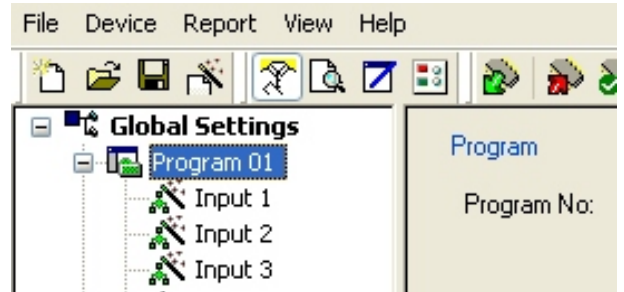
LAUNDRY UNITS - PROGRAM SUMMARY SCREEN

The Program Summary screens are accessed by clicking on a program name/number in the Program Tree at the left of the screen.

The summary screen will show the user at a glance:

- The inputs, which are used under the program
- The pumps assigned to each input
- The speed, which has been set for each pump
- The pulse count for each pump
- The run time/dosage for each pump
- The delay time for each pump

(Note: The White folder next to the Program number in the tree will become Green when the Program contains enabled parameters)



Before the pumps are calibrated, they must first be primed. This can be done via the keypad on the front of the unit (see dispenser instructions).

Select the [Edit Extras] button on the toolbar (or from the [View] menu, select [Extras]).

Select the device that you wish to calibrate, and click [Modify Extras].

Enter the unit's four-digit access code, and click [OK].

The "Extras" window will then open.

The software will automatically read the calibration settings from the selected unit when the "Edit Extras" window opens. This can also be done by clicking the [Read from Unit] button.

Along the left side of this window are the pump buttons. Clicking on one of these buttons will cause the respective pump to run for 1min at the displayed speed (to stop the pump, press any button on the keypad of the dispenser, followed by the escape key on your computer keyboard).

Click on each button in turn, and measure the volume of product dispensed by the pump in 1min.

The volume can then be entered into the respective text box on the right hand side of the window.

Do this for each pump in turn, until you have entered values for all of the pumps.

Note:
If no unit is attached, open the "Edit Extras" window and input approximate values into the text boxes.

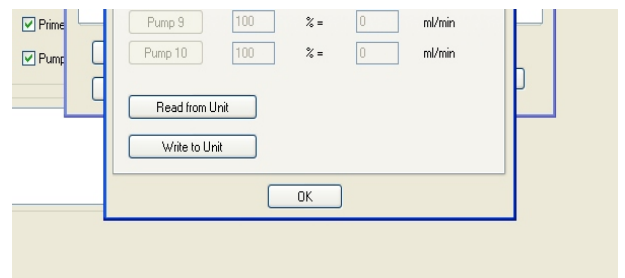
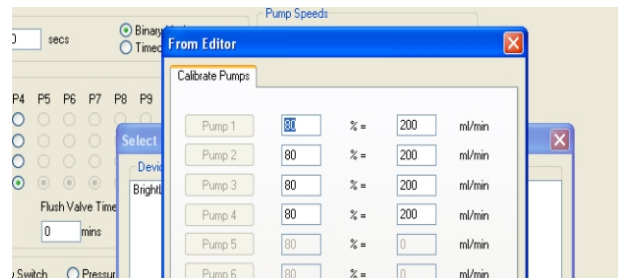
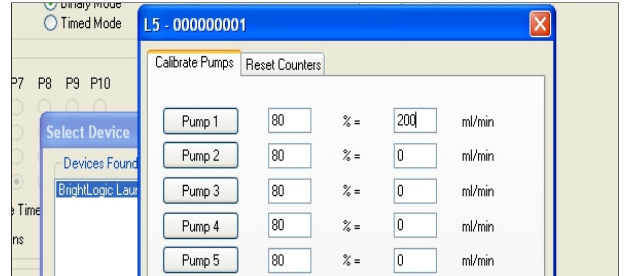
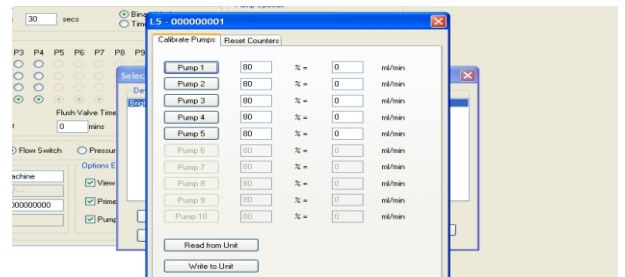
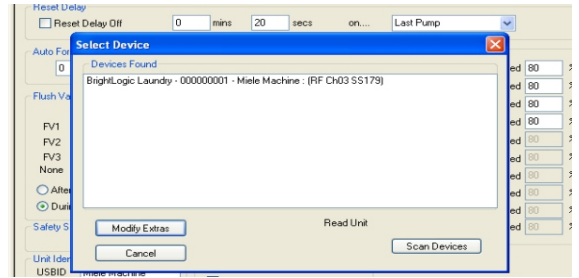
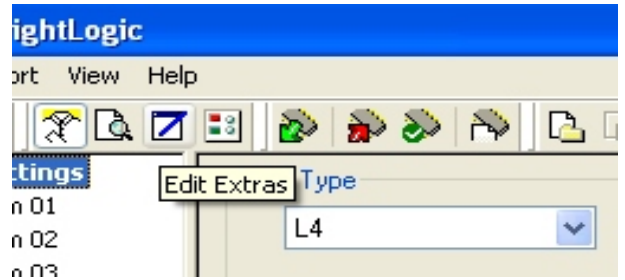
Once all of the pumps have calibration values, you can either:

Click [OK]
This will save the calibration data into the program editor, to be used with the programs that you are currently modifying.

Or

Click [Write to Unit]
This will save the calibration data directly to the previously selected unit. The data will only be used with the program you are currently editing, once ok is pressed. To verify that this data has been correctly written to the unit, click [Read from Unit].

These calibration values will be displayed on the global settings screen next to the pump speeds.



From the “Edit Extras” window, it is also possible to reset the Cycle and Wash counters.

Access the “Edit Extras” window, as previously described.

Click on the [Reset Counters] tab at the top of the window and you will have the option to:

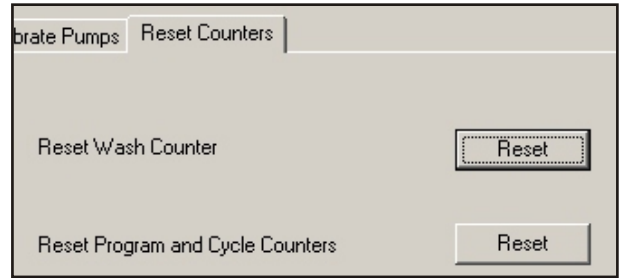
Reset Wash Counter

Use this button to reset the “Total Wash Cycles” counter which appears in the top left of the LCD screen on the unit.

Reset Program and Cycle Counters

Use this button to reset all of the individual counters for Program Cycles, Pump Cycles and Flow Quantity/Run Time

Click the required button (or both if necessary), and then click [OK] to close the window.



LAUNDRY UNITS - RE-NAMING PROGRAMS

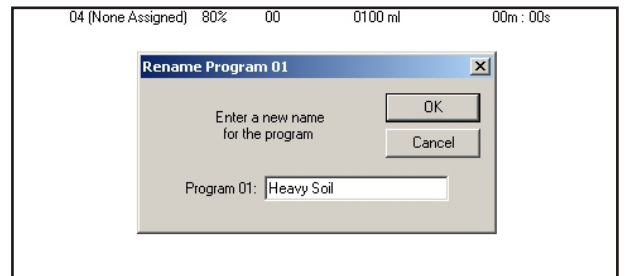
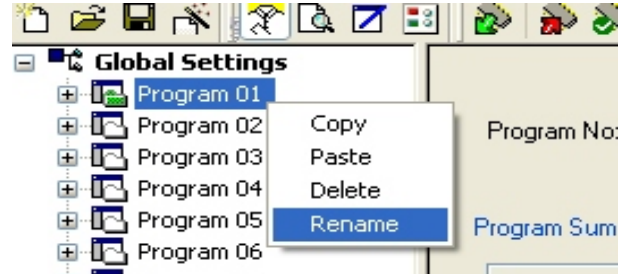
To re-name a program.

Right click on the desired program in the “Program Tree” (this will automatically display the “Program Summary” screen for that program).

Select [Rename] from the menu.

This will open the “Rename” window. Type in the new name for the program (up to 16 characters) and click [OK] to confirm.

This name will be stored to the memory of the Brightlogic (when writing to the unit), and will be printed to reports and displayed on the formula select module.



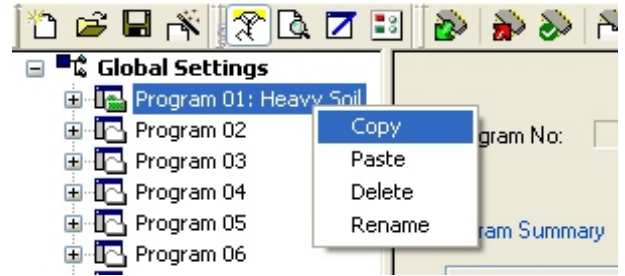
To copy the input settings from one program, to another.

Right click on the desired SOURCE program in the “Program Tree”

Select [Copy] from the menu.

Right click on the DESTINATION program in the “Program Tree”, and select [Paste] from the menu.

Note:
All of the settings from the source program will be copied, including the name. The program may therefore have to be re-named.



LAUNDRY UNITS - DELETING PROGRAMS

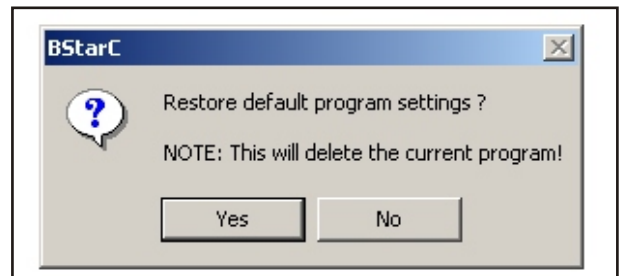
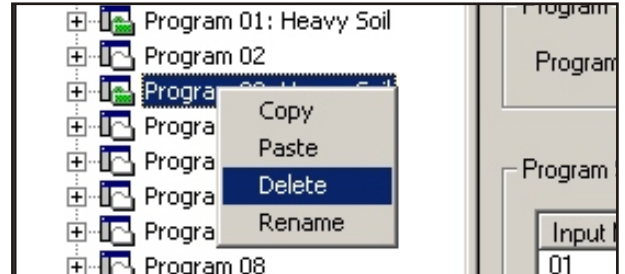
To Delete a program:

Right click on the desired program name in the program tree.

Select [Delete] from the menu.

Click [OK] to confirm.

This will disable all pumps and return all parameters to the default figures (including the program name).



From the VIEW pull down menu, select “Chemical list”.

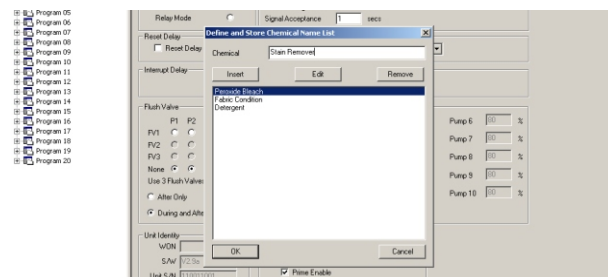
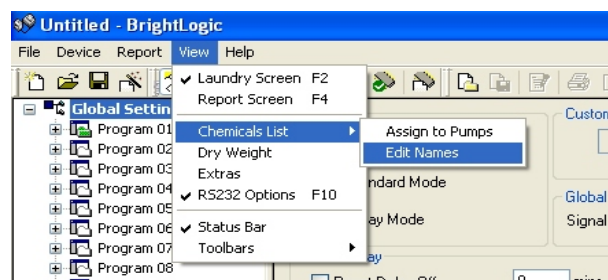
Then select “Edit Names”.

The “Define and Store Chemical Name List” window will be displayed.

Type in the name of one of the products that you expect to use and click [Insert].

Repeat this process with other product names, until you have a comprehensive list of all of the products that you use.

Once the list of product names is complete, click [OK] to close the window and save the list.



LAUNDRY UNITS - ASSIGNING CHEMICAL NAMES

From the VIEW pull down menu, select “Chemical list”.

Then select “Assign to Pump”.

The “Assign Chemical Names” window will be displayed.

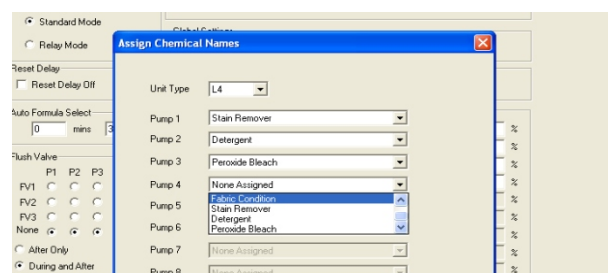
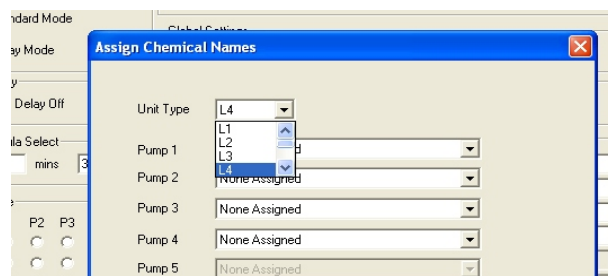
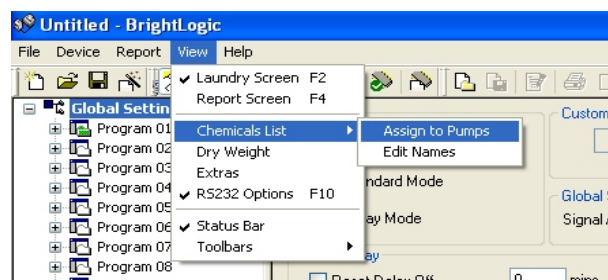
From the pull down menu at the top of the window, select the type of unit, which you are programming. The appropriate number of pumps for that unit will then be enabled.

Use the pull down menus to select the products that will be used with each pump.

Once the correct products have been assigned to all of the pumps, click [OK] to close the window and save.

Note:
This data will be saved to your computer, so that the file can be accessed at a later date, or e-mailed to a colleague.

The BStar.INI file is located in:
C:\WINNT for Windows 2000 and C:\WINDOWS for XP



The “Machine Weight” function, allows for easy adaptation of your programs to work with larger or smaller machines.

Firstly, open a saved set of programs (formulas), or read the program settings from a working unit.

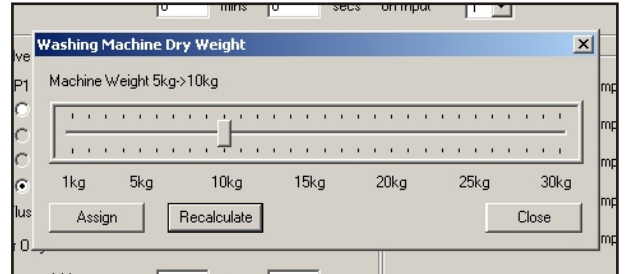
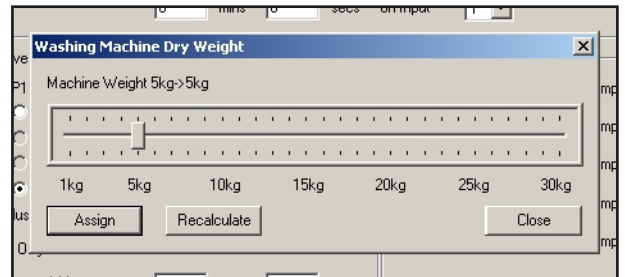
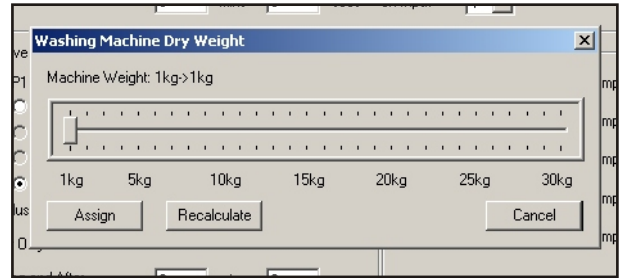
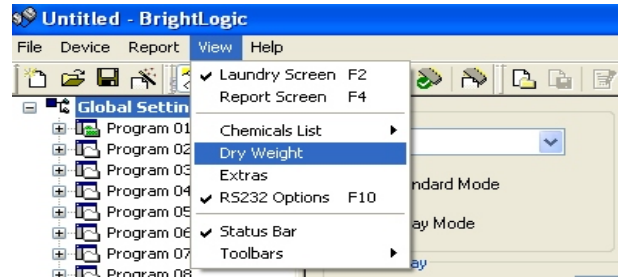
From the [View] pull down menu, select [Dry weight].

Drag the scroll bar across (or move with cursor keys), to select the weight of the machine for which the original program was intended. Click [Assign].

Then move the scroll bar to the weight of the new machine and click [Re-calculate]. Then click [OK] to accept the new weight.

The program will automatically adjust all of the pump run times/dosages to suit the new machine.

You can then [Close] the window.



LAUNDRY UNITS - ADDING COMMENTS TO PROGRAMS

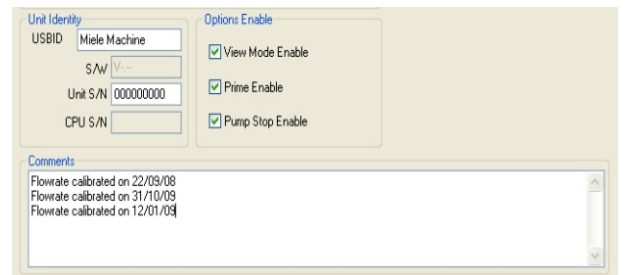
To store comments into the unit, type the text into the comments box at the bottom of the “Global Settings” screen (maximum of 2000 characters).

When reading from the unit it will display the comments that have been previously stored.

When writing to the unit (see page 16), it is possible to either:

Replace Comments - Previous comments are overwritten

Append Comments - New comments are added to previous



Once all of the necessary parameters have been correctly entered into the program editor, the program must then be uploaded (written) to the attached unit.

When using the wireless USB you can add an ID to the unit as its possible to pick up more than one unit. A 16 Character reference can be assigned to a unit making identification of units simple.

This only needs to be done on the first setup, but can be changed later if required.

Select the [Write Device] icon on the toolbar.

In the “Select Device” screen, pick the unit that you wish to write the program to and click [Write Unit].

Enter the unit’s four-digit access code and click [OK].

Select from the list, the information that you wish to write to the unit, or click [Select All].

Note:
When selecting all, the “Unit Serial Number” box will remain unchecked. This is because the serial number can only be written a maximum of six times (see below).

Click [OK] to upload the selected data to the unit.

Note:
You will be given the option to use the calibration figures set in the computer or the unit calibration figures. A choice must be selected or you will not be able to continue.

Once you have written the program to the unit, the data will automatically be verified.

Manual Verify

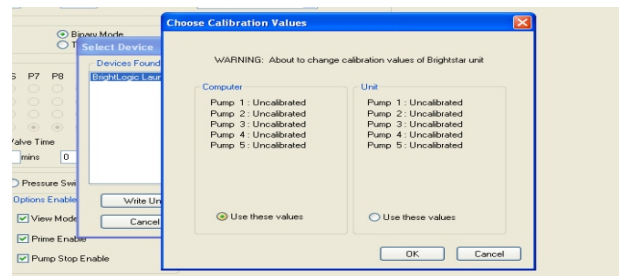
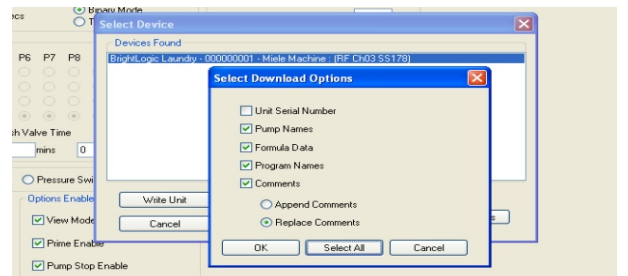
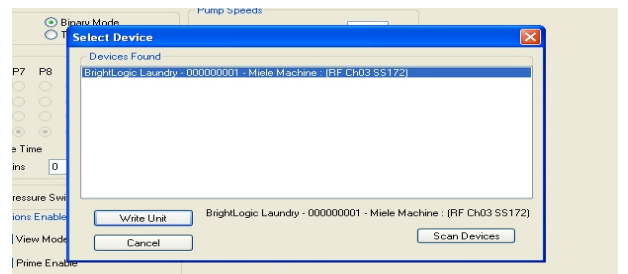
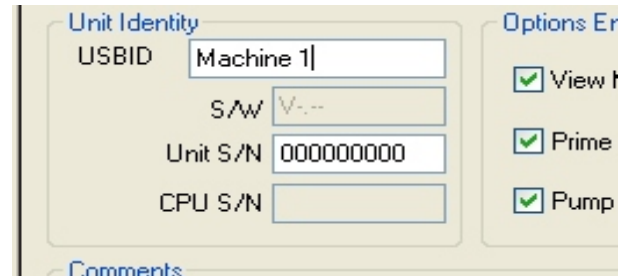
Select the [Verify Device] icon on the toolbar to ensure that the parameters have been successfully transferred.

Note:
If you are replacing a Mainboard, the replacement will have a different serial number to the unit.

You can overwrite the serial number of the microboard by entering the serial number of the unit into the “Unit S/N” text box in the program editor.

When writing to the unit, check the box next to “Unit Serial Number”, in the “Select Download Options” menu. The correct S/N will then be written to the unit.

A new serial number can only be written to a mainboard a maximum of six times.



LAUNDRY UNITS - WRITING TO A BLUETOOTH ENABLED UNIT ENGLISH

Once all of the necessary parameters have been correctly entered into the program editor, the program must then be uploaded (written) to the attached unit.

When using the wireless USB you can add an ID to the unit as its possible to pick up more than one unit. A 16 Character reference can be assigned to a unit making identification of units simple. This only needs to be done on the first setup, but can be changed later if required.

Select the [Bluetooth Scan] button

In the Select Device window, pick the unit that you wish to read from and click [Scan Devices] The unit will appear as BLL_1 (H- 064) 1 refers to the channel number of the unit (see page 3) H 064 is the signal strength H=High, M= Medium, L =- Low the number refers to how good the signal strength is. Lower numbers are stronger signals

Select the unit that appears ending in (RS232/BT)
Select the [Write Device] icon on the toolbar.

Enter the unit's four-digit access code and click [OK].

Select from the list, the information that you wish to write to the unit, or click [Select All].

Note:
When selecting all, the "Unit Serial Number" box will remain unchecked. This is because the serial number can only be written a maximum of six times (see below).

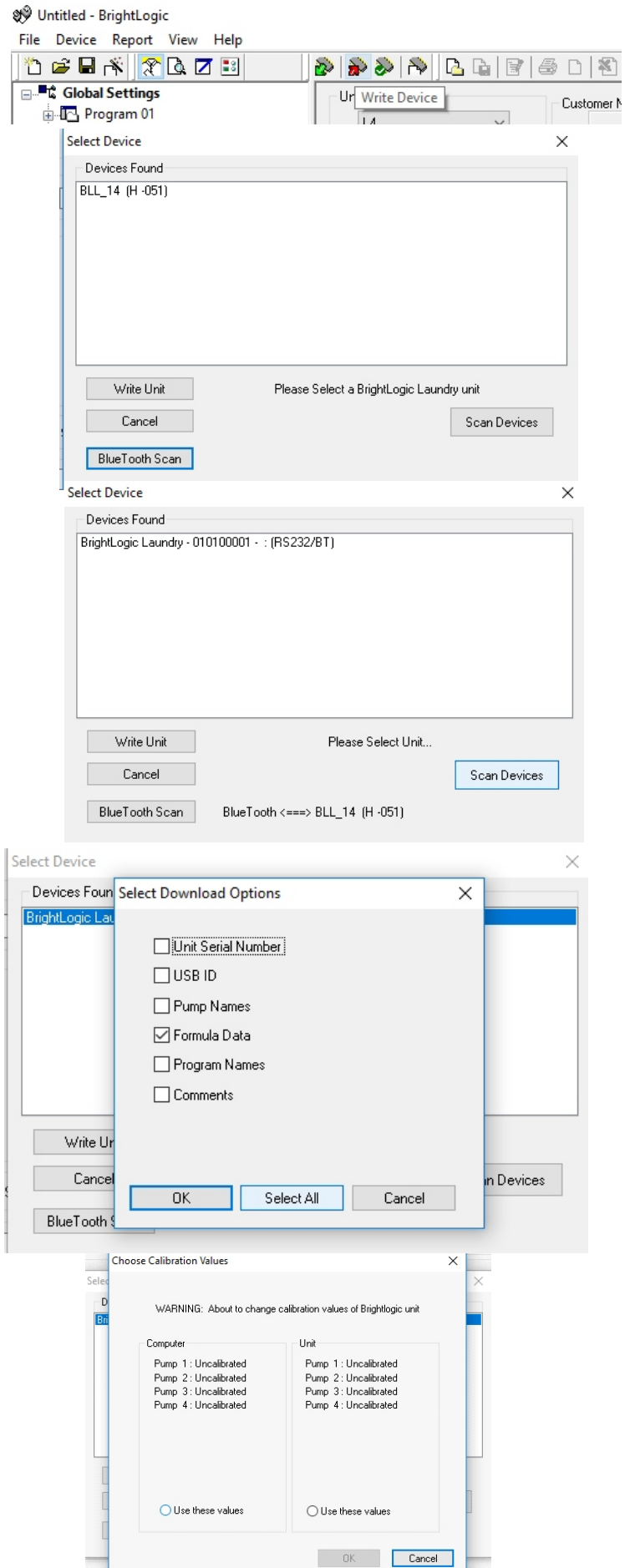
Click [OK] to upload the selected data to the unit.

Note:
You will be given the option to use the calibration figures set in the computer or the unit calibration figures. A choice must be selected or you will not be able to continue.

Once you have written the program to the unit, the data will automatically be verified.

Note:
If you are replacing a Mainboard, the replacement will have a different serial number to the unit.

When writing to the unit, check the box next to "Unit Serial Number", in the "Select Download Options" menu. The correct S/N will then be written to the unit. A new serial number can only be written to a mainboard a maximum of six times.

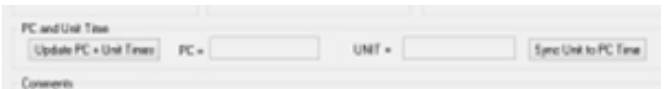
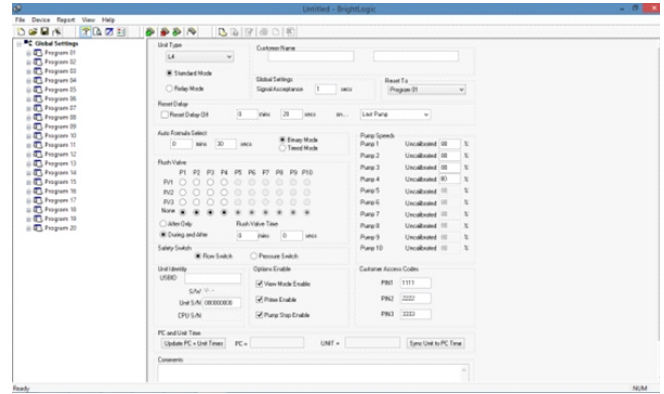


REPORTS - SYNCHRONISING DATE AND TIME ENGLISH

(PC Software version 1.50 or gretaer)

In order to produce reports of a set date range, the pump's date and time have to be set. From the computer software you can automatically update the pump's date and time.

Select the [Sync unit to PC time] tab which will update the pump with the current date and time.



REPORTS - CREATING A REPORT

Select [Device Reports] from the toolbar.

In the "Select Device" window, pick the device that you wish to create a report for and click [Create Report].

Enter the unit's four-digit access code and click [OK].

You will be given the choice of creating a report of:

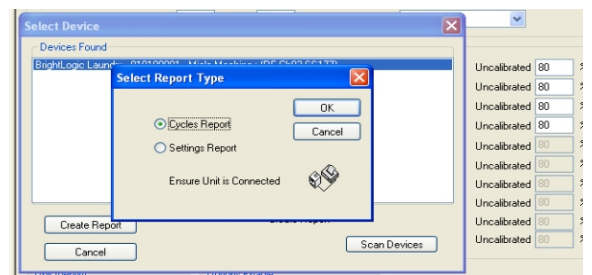
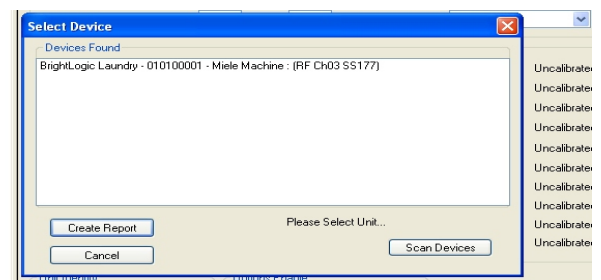
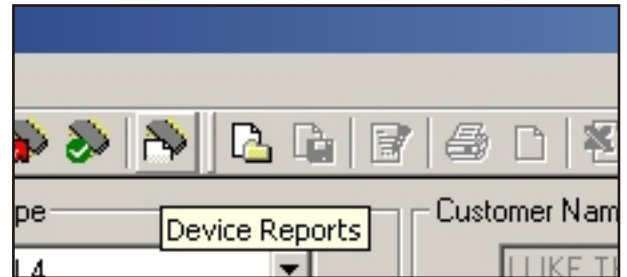
The cycles that the unit has performed

or

The program settings of the unit

Select the desired option and click [OK].

The desired report will then be created and displayed on screen.



(PC Software version 1.50 or greater)

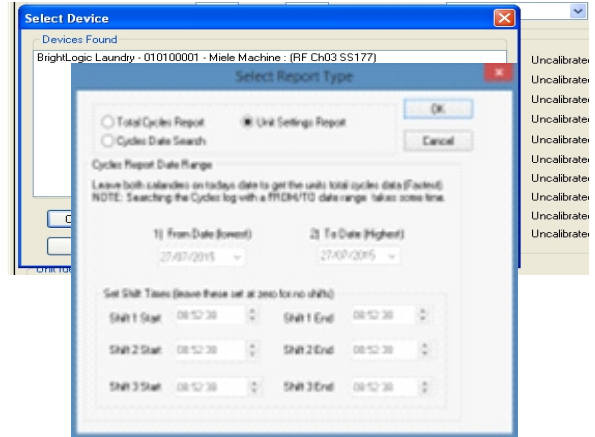
In order to use this feature a real time clock module must be connected to the main board.

To check the pump has the module connected, press the down arrow button on the pumps main display. If a date and time are displayed the module is connected, if nothing happens then the module is not connected.

When connecting to the pump to download a report select the Cycles Date Search tab as described on page 16.

Using the drop down menu's [shown right] select a start and end date that the report is required for. Select the OK tab to proceed.

From the same menu it is also possible to select shift times. The software allows up to three separate shifts to be programmed. Select a start and end time for each shift [shown right] selecting the OK tab to proceed.



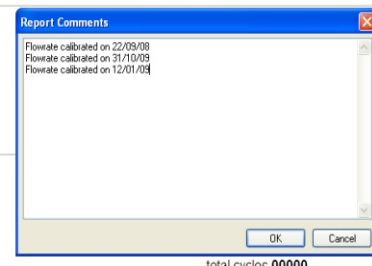
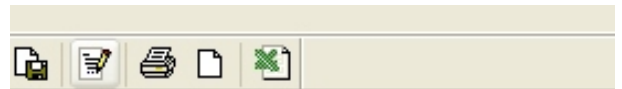
REPORTS - ADDING COMMENTS TO A REPORT

To include your comments on the report, click the [Report Comments] button on the toolbar.

Type your comments into the text box and click [OK] when complete.

The text will appear in the section at the bottom of the report.

The report can then be Saved, Printed or Cleared by using the relevant icons from the toolbar.

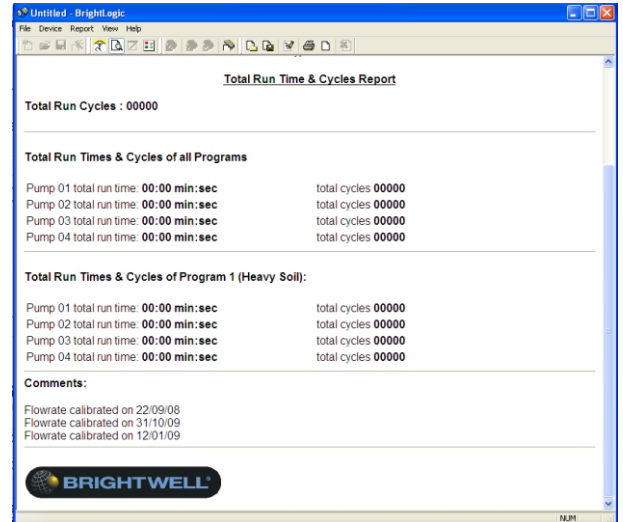


It is possible to add your own logo to the report, in place of the Brightwell logo.

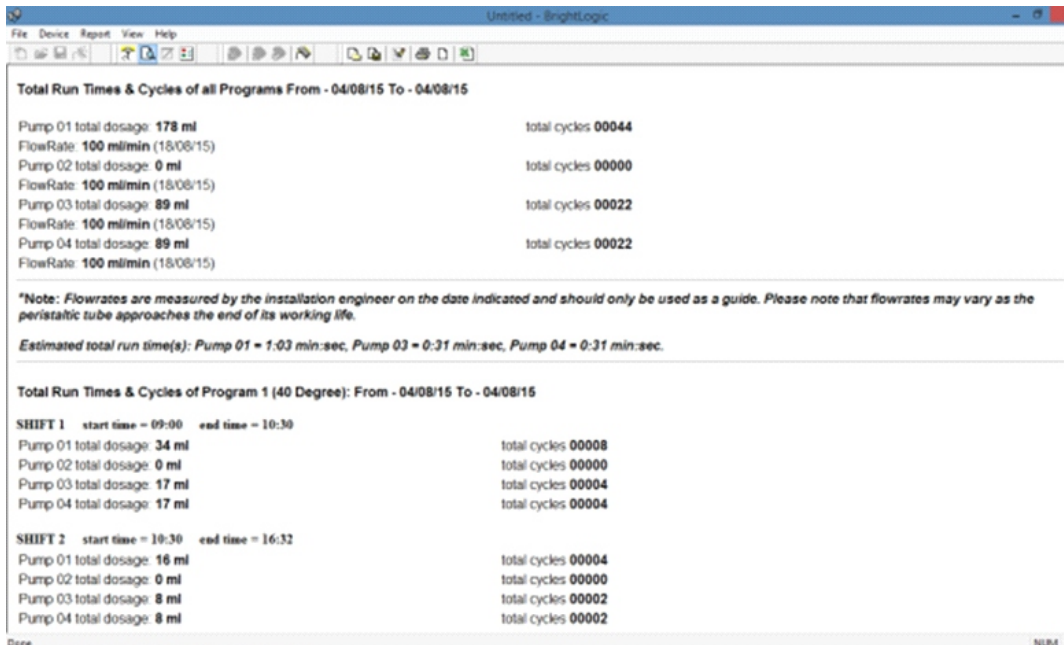
Locate the folder
"C:\Program Files\Brightwell\Brightlogic"

In this folder, find the [footer.jpg] file and replace it with your own image.

Note:
The new image must be renamed [footer.jpg]



REPORTS - EXAMPLE REPORT WITH DATE AND TIME



Date: 04/08/2015 Time: 13:37:34

Serial Number: 010100001 Unit Type: L4 Software Version: 1.50

Total Run Time & Cycles Report

Total Run Cycles : 00022

Total Run Times & Cycles of all Programs From - 04/08/15 To - 04/08/15

Pump 01 total dosage: 178 ml	total cycles 00044
FlowRate: 100 ml/min (04/08/15)	
Pump 02 total dosage: 0 ml	total cycles 00000
FlowRate: 100 ml/min (04/08/15)	
Pump 03 total dosage: 89 ml	total cycles 00022
FlowRate: 100 ml/min (04/08/15)	
Pump 04 total dosage: 89 ml	total cycles 00022
FlowRate: 100 ml/min (04/08/15)	

**Note: Flowrates are measured by the installation engineer on the date indicated and should only be used as a guide. Please note that flowrates may vary as the peristaltic tube approaches the end of its working life.*

Estimated total run time(s): Pump 01 = 1.03 min:sec, Pump 03 = 0.31 min:sec, Pump 04 = 0.31 min:sec.

Total Run Times & Cycles of Program 1 (Dirty Laundry): From - 04/08/15 To - 04/08/15

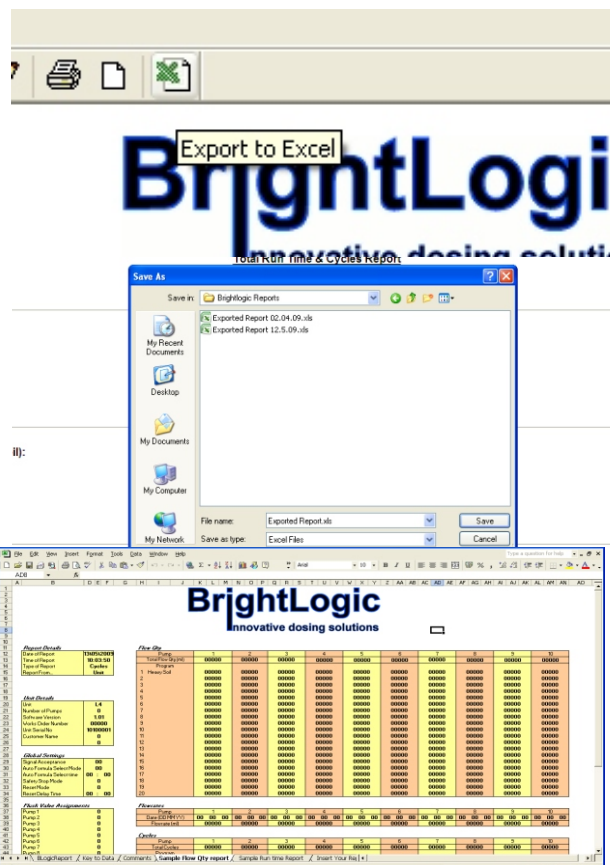
SHIFT 1	start time = 10:00	end time = 10:31
Pump 01 total dosage: 34 ml	total cycles 00008	
Pump 02 total dosage: 0 ml	total cycles 00000	
Pump 03 total dosage: 17 ml	total cycles 00004	
Pump 04 total dosage: 17 ml	total cycles 00004	
SHIFT 2	start time = 10:31	end time = 12:34
Pump 01 total dosage: 16 ml	total cycles 00004	
Pump 02 total dosage: 0 ml	total cycles 00000	
Pump 03 total dosage: 8 ml	total cycles 00002	
Pump 04 total dosage: 8 ml	total cycles 00002	

REPORTS - EXPORTING A REPORT

The reports can also be exported to an Excel spreadsheet

Click the [Export to Excel] icon and enter a filename to save the report. Excel will then automatically open

Utilise the standard report template, or follow the on-screen prompts to create your own report template



NOTES

Guarantee

All Brightwell dispensers are guaranteed for two years from the date of purchase against defects in materials and faulty workmanship. Peristaltic tubing is not guaranteed.

Chemical compatibility

We are pleased to offer advice on chemical compatibility, however our guarantee does not cover problems caused by chemical incompatibility.

Safety First

Always follow the chemical manufacturers Health and Safety instructions when using chemicals.

Technical and Design specifications

Specifications within this catalogue are subject to alteration without notice.

BRIGHTWELL DISPENSERS LTD

Unit 1, Rich Industrial Estate, Avis Way, Newhaven, East Sussex, BN9 0DU, UK

T +44 (0)1273 513 566 **F** +44 (0)1273 516 134 **E** sales@brightwell.co.uk **W** brightwell.co.uk

VAT No: GB 100 1998 47. Company registration No: 0661996. Registered in England.

Brightwell Dispensers Ltd is a Bright-Tech Investments Ltd Company