

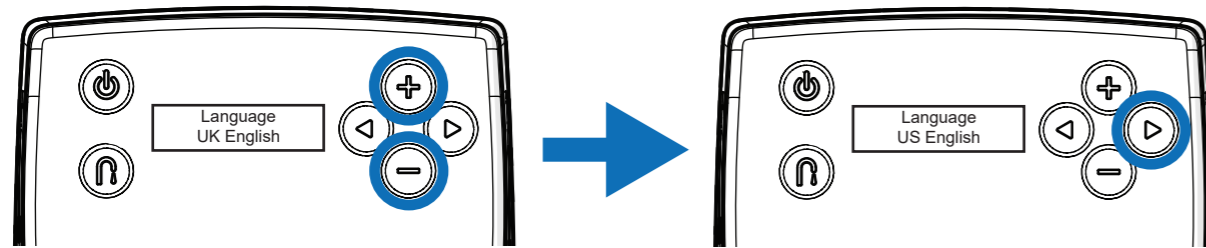
# QD200 Firmware Upgrades (v4.20 & 5.20+ August 2023)

## Probe Mode

1

### LANGUAGE

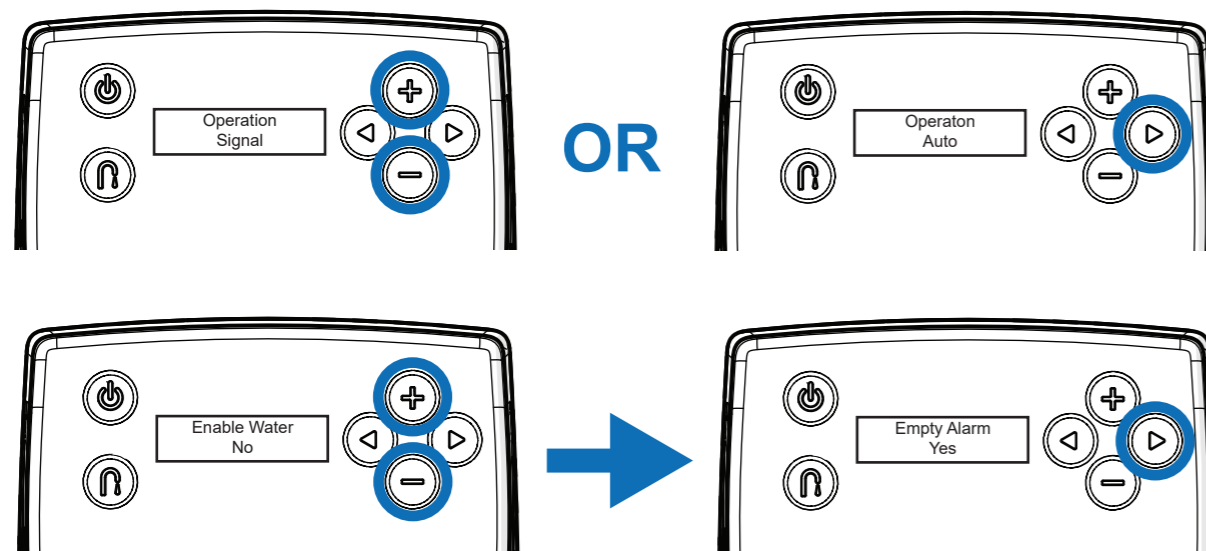
English is now **UK-English** and **American** is now **US-English**. Use the **+** & **-** buttons to change the language and the **▶** arrow to confirm selection.



2

### WATER SENSE

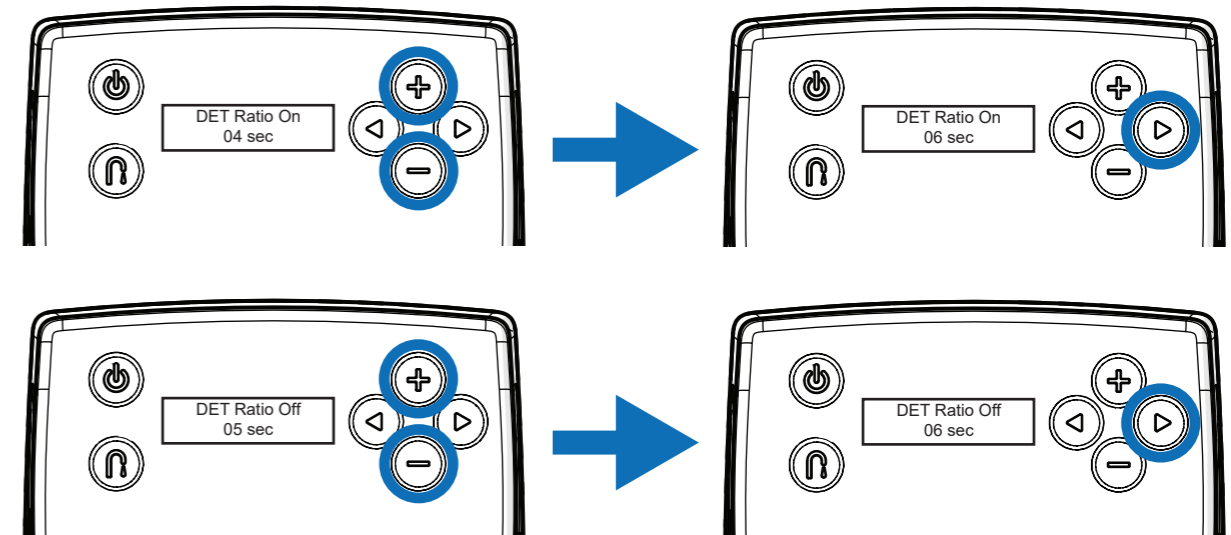
When fitted with a probe the unit can detect if water is touching the probe tips. When **Auto Sense** is selected, detergent and rinse aid are only dispensed if there is water present in the tank. Use the **Enable Water Empty Alarm** setting to activate this feature; the default is **No** change this to **Yes**. Use the **+** & **-** to change the setting. The **▶** button will save the setting.



3

### PROBE SET POINT

When the probe set point is **within 10%** of the target, the pump will slow down, or the solenoid will start to pulse. The pump is slowed to a fixed percentage. If the unit is fitted with a solenoid the pulsing is adjustable. Both the **ON** and **OFF** time are set from 1 to 10 seconds, using the **DET ratio ON** and **OFF** settings. Use the **+** & **-** to change the setting. The **▶** button will save the setting.



# QD200 Firmware Upgrades (V4.20 & 5.20+ August 2023)

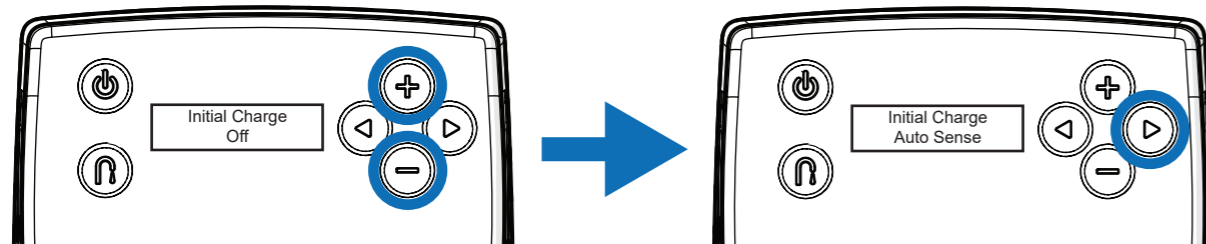
## Probeless Mode (with probe fitted)

1

### INITIAL CHARGE AUTO SENSE MODE

If fitted with a probe this option will dispense an **Initial Charge** when water is detected at the probe tips. Each time the tank is drained and refilled this option will cause an **Initial Charge** to be dispensed.

Use the **+** & **-** to change the setting. The **▶** button will save the setting.



2

### OUT OF DETERGENT PRODUCT ALARM

If the **Probe Alarm** is set to any time other than zero, the alarm will sound if there is a cumulative call for detergent and the probe set point is not reached within the **Probe Alarm Time**.

Use the **+** & **-** to change the setting. The **▶** button will save the setting.

