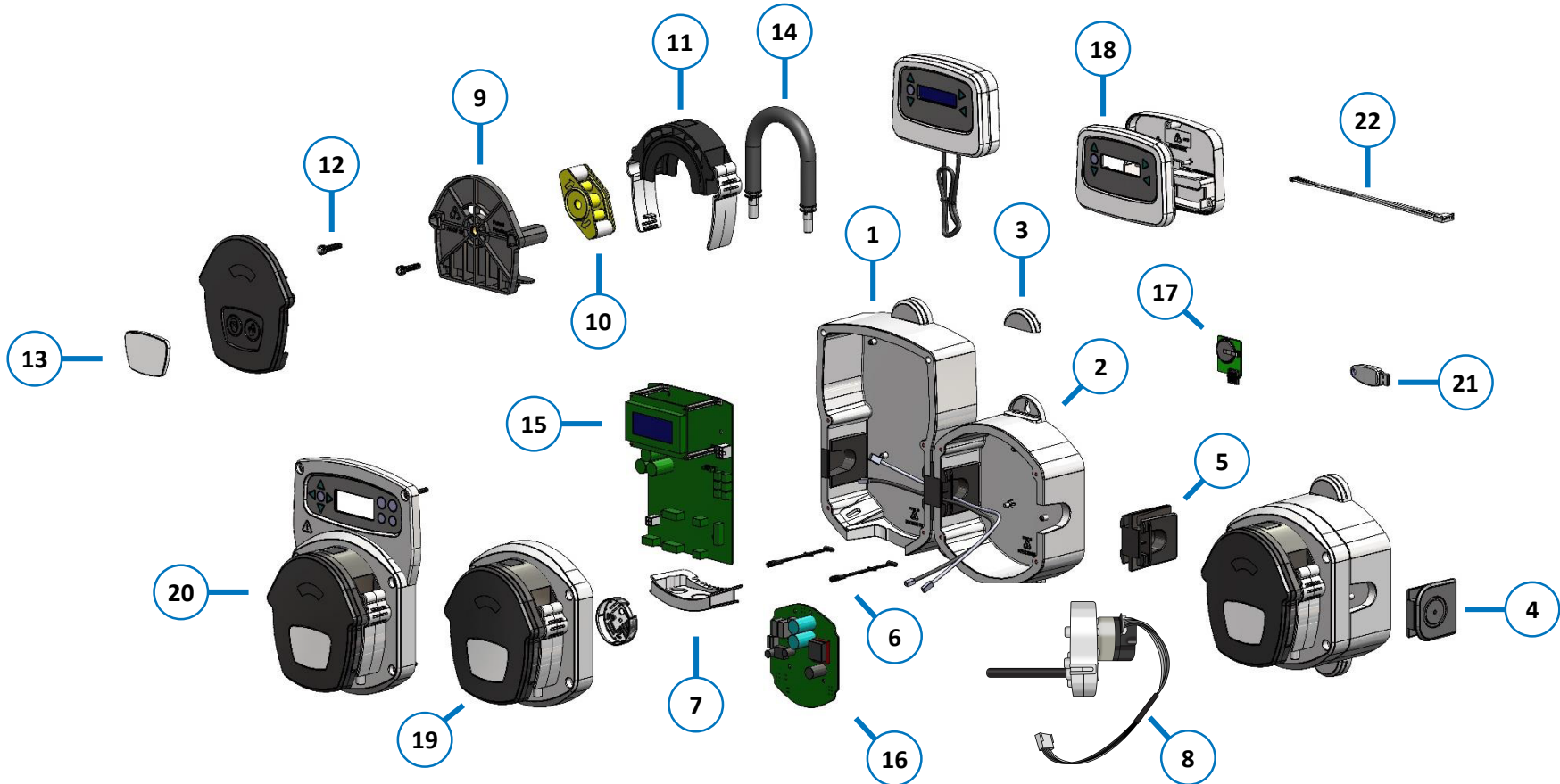


BRIGHTWELL

REVOLUTIONARY DISPENSING SOLUTIONS



Brightlogic High Flow Spares Diagram

Item	Stock Code	Description
1	XSB052/U9	BRIGHTLOGIC HIGH FLOW ENCLOSURE
2	XSB054/U9	BRIGHTLOGIC HIGH FLOW PUMP ENCLOSURE
3	XSB060/U9	BRIGHTLOGIC SCREW COVERS -10PK
4	XSB061/U9	BRIGHTLOGIC END WEDGES -10PK
5	XSB062/U9	BRIGHTLOGIC LINK WEDGES -10PK
6	XSB063/U9	BRIGHTLOGIC HINGE STRAP (10PK)
7	XSB065/U9	BRIGHTLOGIC CABLE ENTRY (HF)
8	XSB128/U9	BLOGIC HF MOTOR 24V 60RPM
9	XSB201/U9	BRIGHTLOGIC HF PUMP BODY - 5PK
10	XSB204/U9	BRIGHTLOGIC HF PUMP ROTOR - 10PK
11	XSB206/U9	HF PUMP RACE & CLIPS
12	XSB207/U9	L PUMPHEAD SCREWS (SPH)
13	XSB212/U9	BRIGHTLOGIC PLAQUE (10 PK)

Item	Stock Code	Description
	XSB504/U9	BRIGHTLOGIC HF Grey Silicone Quick Connect (1PK)
14	XSB508/U9	Brightchem HF Quick Connect (1 PK)
	XSB510/U9	Brightchem HF 3/8 Barb Connect (1 PK)
	XSB512/U9	BRIGHTLOGIC HF 3/8 Barb Grey Silicone (1PK)
	XSB513/U9	HF EPDM Quick Connect Tube
15	XSB003/U9	BRIGHTLOGIC LAUNDRY BOARD
16	XSB004/U9	BRIGHTLOGIC ADD ON BOARD
17	XSB014/U9	REAL TIME CLOCK PCB (1PK)
18	XSB069/U9	FORMULA SELECT COVER & MEMBRANE
19	XSB107/U9	HF ADD ON LID ASSY
20	XSB106/U9	LOGIC HF CONTROL LID ASSY
21	WLCOM-WBT/U9	USB PC BLUETOOTH DONGLE
22	XSB151/U9	BRIGHTLOGIC 240MM MOTOR LOOM (5 PK)

BRIGHTWELL DISPENSERS INC.

9858 Britton Street, Lenexa, Kansas, 66219, USA

T (+1) 913-956-4909 F (+1) 913-948-9470 E sales@brightwell-inc.com W brightwell-inc.com

Registered in the USA

BRIGHTWELL
REVOLUTIONARY DISPENSING SOLUTIONS